

1 bedroom, 1 bathroom, 4 SHARE
1 king split, 1 double sofa bed
1 spa bath, 1 shower, 1 toilet

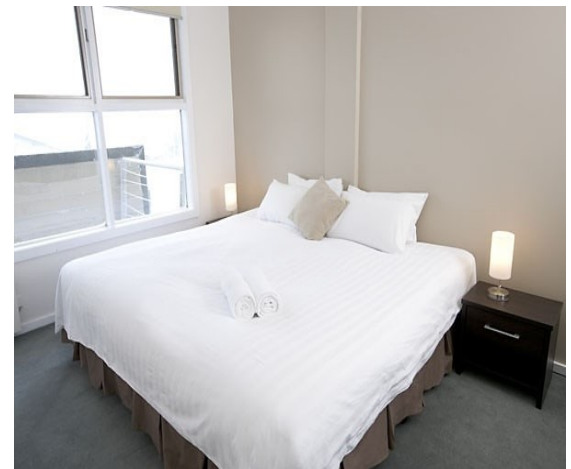


White Crystal apartments are centrally located in the Hotham Central building opposite the day carpark. These luxurious fully self contained apartments offer views over Swindlers Valley ski area or the Summit / Great Alpine Road.

The property offers direct ski in – ski out access and is adjacent to the Village Chairlift. Within the Hotham Central building are: restaurants, bars/bistro, cafes, ski/board/clothing hire, tickets department, retail stores, supermarket, massage and beauty centre and accommodation reception desk.

Each apartment comes fully equipped with its own corner spa, full kitchen, and private ski locker located on the ground floor. Overnight parking is available in the designated bays alongside the Great Alpine Rd starting beginning 1.8kms from Hotham Central. The free Village shuttle buses run each day of the ski season from the car parks and throughout the village.

White Crystal apartment 108 is situated on the first accommodation level of the Hotham Central building with views to the Summit Run. A ski locker is located on the ground floor.



Bedroom

- 1 King Split
- Wardrobe
- Bedside Lamps





Living Room

- 1 Double Sofa Bed
- Flat Screen TV
- DVD/CD
- Large Balcony



Kitchen/Dining

- Stainless steel Electric oven
- Stainless steel Electric stove
- Microwave
- Dishwasher
- Fridge
- Dining for 4 people



Bathroom

- Shower over 2/3 person spa
- Hand Basin
- Toilet
- Hairdryer

Laundry

- Washing Machine
- Dryer
- Ironing Board & Iron
- Trough

All apartments contain fresh linen at the start of your stay and a starter supply of consumables.